

PopChart Quick Start



Corda Technologies, Inc.

350 South 400 West, Suite 100

Lindon, UT 84042

Headquarters: (801) 805-9400

Fax: (801) 805-9405

Sales: (801) 805-9500

Technical Support: (801) 805-9505

Press Contact: (801) 805-9431

Sales Email: sales@corda.com

Support Email: support@corda.com

Microsoft and Windows are either registered trademarks or trademarks of Microsoft Corporation in the United States and/or other countries. Screen shots reprinted by permission from Microsoft Corporation. Macromedia, ColdFusion, and Flash are trademarks or registered trademarks of Macromedia, Inc. in the United States and/or other countries. Java and JavaScript are trademarks of Sun Microsystems, Inc. in the United States and other countries. Mac OS is a trademark of Apple Computer, Inc., registered in the U.S. and other countries. SVG is a trademark of the World Wide Web Consortium. All other trademarks are the property of their respective owners.

Copyright © 1996-2002 CORDA Technologies Inc.™ - PopChart™ - All Rights Reserved.

Contents

CHAPTER 1 Quick Start

What Is PopChart?	1-2
Publishing a Basic PopChart	1-5

- CONTENTS
- *Quick Start*
-
-



QUICK START

Welcome to the *PopChart Quick Start* manual. This manual is designed to help you quickly learn the basics of PopChart Builder and PopChart Server. In this manual, you will learn how to create a PopChart from scratch and embed it in a web page.

To learn about the features of PopChart Server in greater detail, refer to the [PopChart Server User Guide](#). For greater detail on PopChart Builder, refer to the [PopChart Builder User Guide](#). If you are looking for a reference on PopChart Server's commands, the PopChartEmbedder APIs, or other specifications, you should refer to the [PopChart Server Reference](#). Finally, we strongly encourage you to see PopChart in action by examining the contents of the [PopChart Examples](#) book.



- **QUICK START**

- *What Is PopChart?*

WHAT IS POPCHART?

In a world of ever increasing information, perhaps no skill is more valuable than the ability to convey that information in the most understandable and accessible format possible. Raw data is no exception to this rule. Yet, because understanding raw data often involves wading through spreadsheet after spreadsheet in search of key figures and trends, it is often the hardest type of information to convey.

For that reason, data visualization is paramount. Graphs and charts can convey in a few seconds information that is often not clear even after hours of analyzing numbers. Data visualization is what Corda Technologies is all about. With our easy-to-use PopChart tools, you can translate your data into state-of-the-art PopChart images—eye-catching, high-resolution, and interactive data-driven graphics, such as the ones on the next page.

A PopChart image can contain a variety of charts and graphs, fed with on-demand dynamic data. It can include explanatory text boxes, callout notes, or PopUp text that appears as a viewer rolls over certain parts of the graph. It can even include interactive drill-down effects, such as linking to another PopChart image as a user clicks on a certain data item, or executing your own custom JavaScript™ functions.

As you read through this documentation, you will learn all about how you can utilize PopChart technology to convey your information. And, if you haven't already, you will soon discover why PopChart is your all-purpose data visualization tool.

ABOUT PopChart Server

PopChart Server does exactly what its name implies—that is, it serves images of charts and graphs. But these aren't just run-of-the-mill static charts and graphs. These are dynamic and interactive images generated by PopChart Server on the fly.

It works like this. You create an appearance file (kind of like a template for a graph) with PopChart Builder. Then, you send this appearance file to PopChart Server, along with data and formatting options, and PopChart Server returns a PopChart image—a graphical representation of your data, complete with PopUp text and the ability to drill-down to another graph that explains a data item in greater detail.

The image can be in one of many different types of formats, including Macromedia® FLASH™, SVG™, PNG, GIF, PDF, EPS, WBMP, and even [d](#) link descriptive text for the visually impaired. You can also interface natively with PopChart Server in a variety of environments, from simple HTML to ColdFusion™; from Java™ Application Servers to Microsoft®'s .NET framework. PopChart Server can accept data from most database and data file formats. It even supports XML, making PopChart Server easy to integrate with your existing database system.

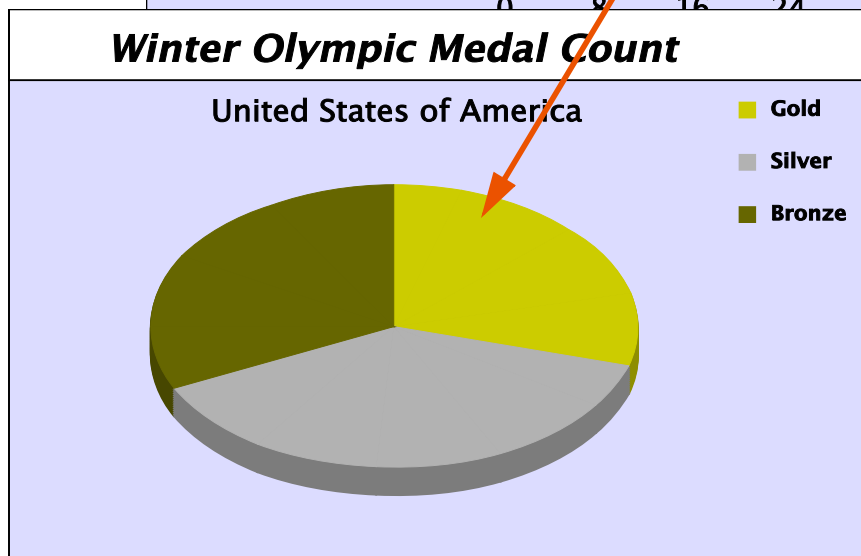
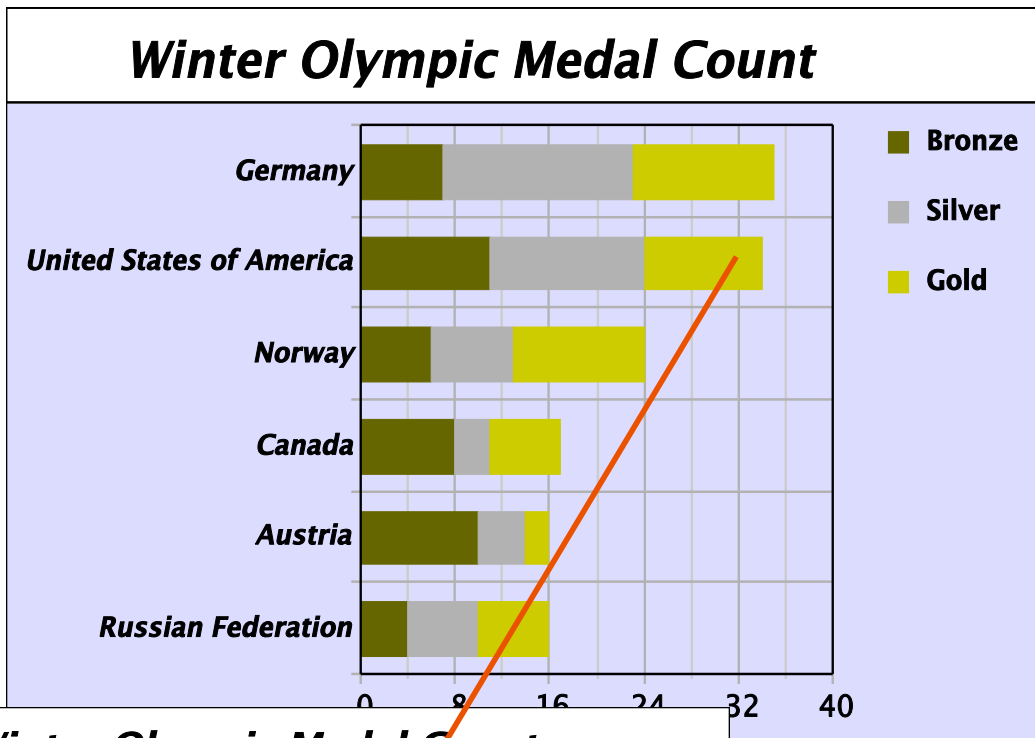
PopChart Server is the fastest, most robust, and most versatile data visualization and charting tool on the market today. Best of all, because PopChart Server is written in 100% Java, it can run on any platform. No matter what environment you operate in, you can take

QUICK START
What Is PopChart?

advantage of PopChart Server's patented DataFunnel™ technology to deploy the latest in state-of-the-art interactive data-driven graphics.

Over 20 different graph types, including Bars, Pies, Gauges, X-Y, Time, and Radar.

Data can be dynamic or static. PopChart also supports XML!



Data items drill-down to other web pages or PopCharts as the user clicks on them. Or you can execute a JavaScript function.

Crisp, colorful, 3D graphics in 7 different formats, including FLASH, GIF, SVG, and PDF.

- **QUICK START**
- *What Is PopChart?*
-
-
-

PopChart Server can be downloaded for evaluation or purchased from the Corda Technologies website at <http://www.corda.com>.

ABOUT PopChart Builder

PopChart Builder is a graphical design tool that helps you design appearance files (templates) for use with PopChart Server. This easy-to-use development tool is purchased separately from PopChart Server, as many companies have multiple developers creating appearance files, but only one or two servers.

PopChart Builder can be downloaded for evaluation or purchased from the Corda Technologies website at <http://www.corda.com>.

PUBLISHING A BASIC POPCHART

The following 15 steps will help you create and publish a basic PopChart image. To follow these steps, all you need is a computer capable of installing and running PopChart Server and PopChart Builder 4.0.5. Although these steps require that you know how to install and run software, these steps do *not* require a lot of computer or web page know-how.

The goal of this section is to create a web page that contains a PopChart image. To do this, we will need to install PopChart 4.0.5. We will then create an appearance file, which can be used as a template for dynamically generated PopChart images. In this particular example, however, we are simply using it to create static graphs. Finally, we will create a basic web page. By inserting a small segment of JavaScript code into this web page, we will be able to publish our PopChart image in the web page.

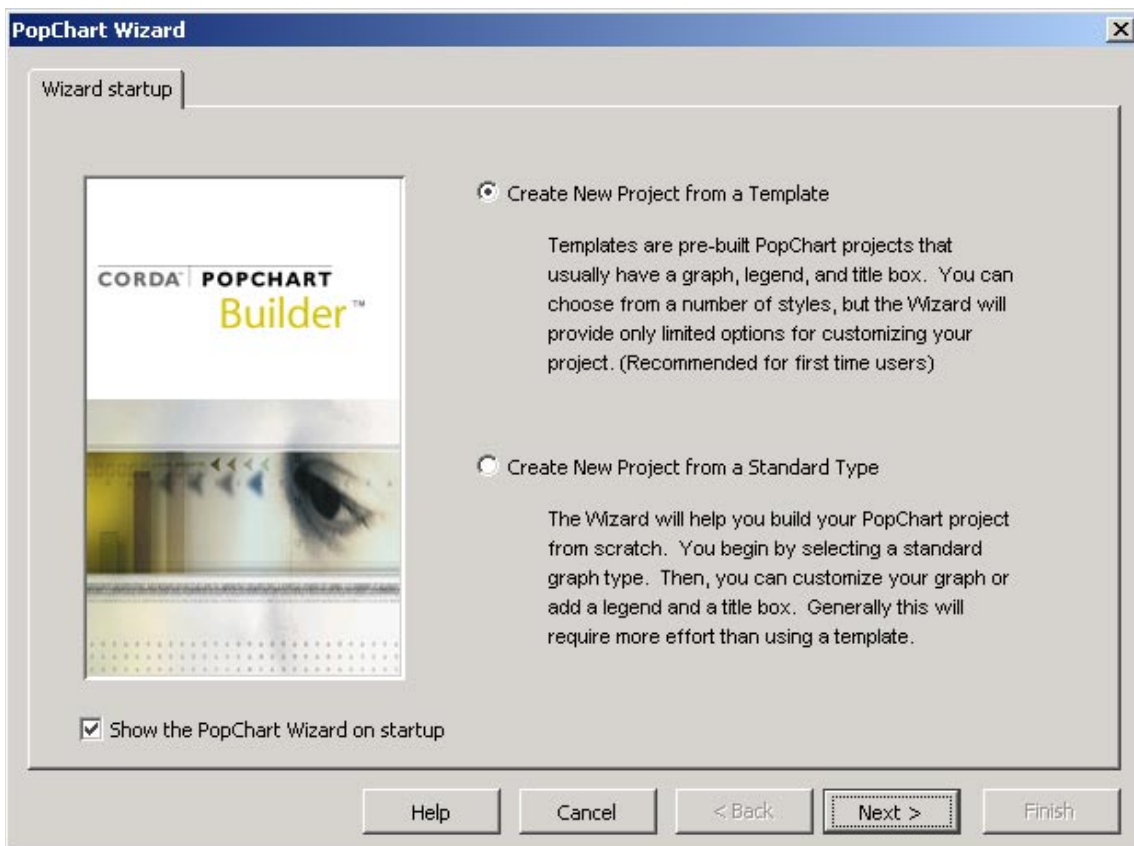
To Publish a Basic PopChart Image

- 1 Download and install PopChart 4.0.5.**

If you need help with this, refer to Chapter 2, “[Installation](#),” in the *PopChart Server User Guide*.

- 2 Run PopChart Builder. You can do this by clicking on the PopChart Builder shortcut. The PopChart Wizard will automatically start.**

- QUICK START
- Publishing a Basic PopChart
-
-



- 3 Select **Create New Project from a Template** and click **Next**.

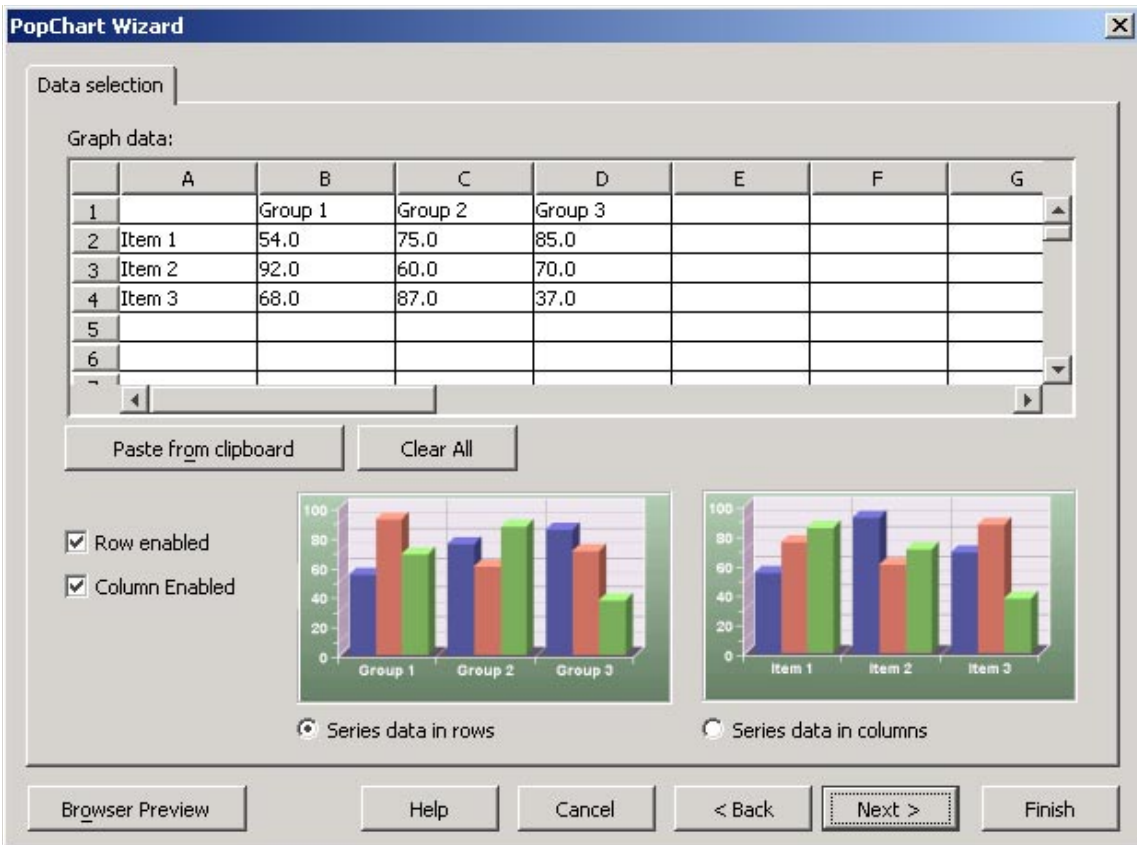


4 Select a template and click Next.

For information about the various graph types that PopChart supports, refer to Chapter 13, “Graph Types,” in the *PopChart Server Reference* manual.

- QUICK START

- Publishing a Basic PopChart

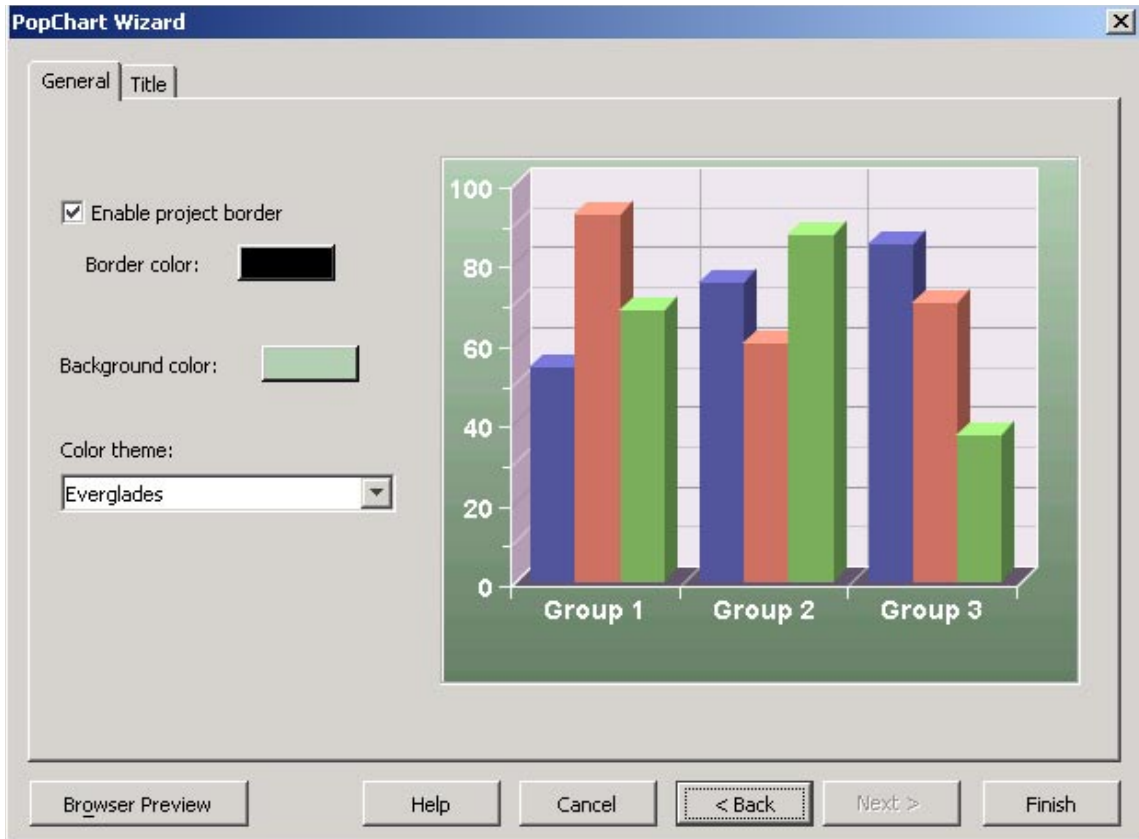


5 Change any data you wish to change in the Data Selection window and click Next.

You can copy data from most spreadsheet programs or table formats and paste it directly into the data editor.

Most of the time, when you create appearance files, this data is irrelevant—it is there just to help you visualize what your graph will look like. Your appearance file will be used to graph data that you send to it dynamically, not the static data you input here. For our *Quick Start Guide*, though, we will just use static data.

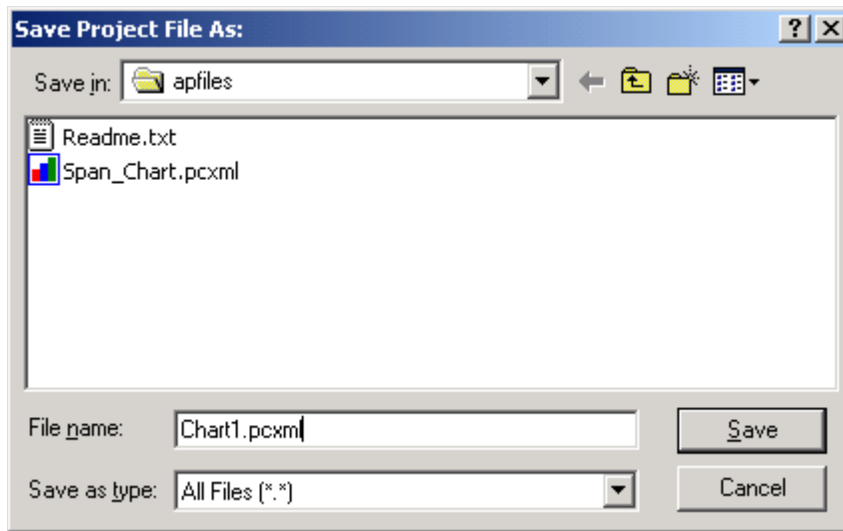
If you need help organizing your data, refer to Chapter 12, “[Data Organization](#),” in the *PopChart Server Reference* manual. If you want to know more about sending dynamic data to PopChart Server, refer to Chapter 6, “[Sending Dynamic Data to PopChart Server](#),” in the *PopChart Server User Guide*.



- 6** Choose a color theme and make any wanted changes to the border and background color and click **Finish**.

This will take you out of the PopChart Wizard and into the PopChart Builder designer. If you wanted to create a more complex appearance file, you could continue to customize it in the designer.

- QUICK START
- Publishing a Basic PopChart
-
-

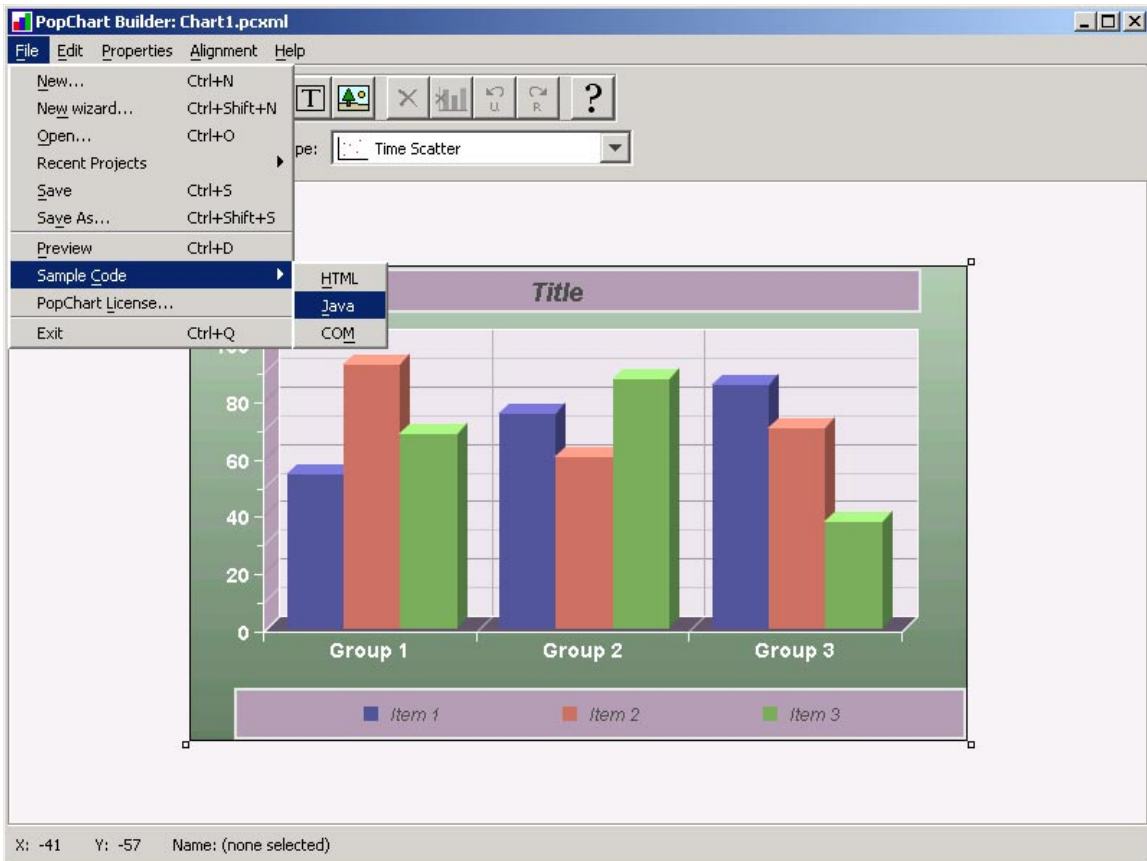


- 7 You have now created your first appearance file. Save your graph by selecting on **File > Save**.

We will save this graph as Chart1.pcxml. Click **Save** to save the image.

Note: By default, the PopChart Server looks for appearance files in the `chart_root/apfiles` folder of the PopChart installation directory. This is also the default save location for PopChart Builder.

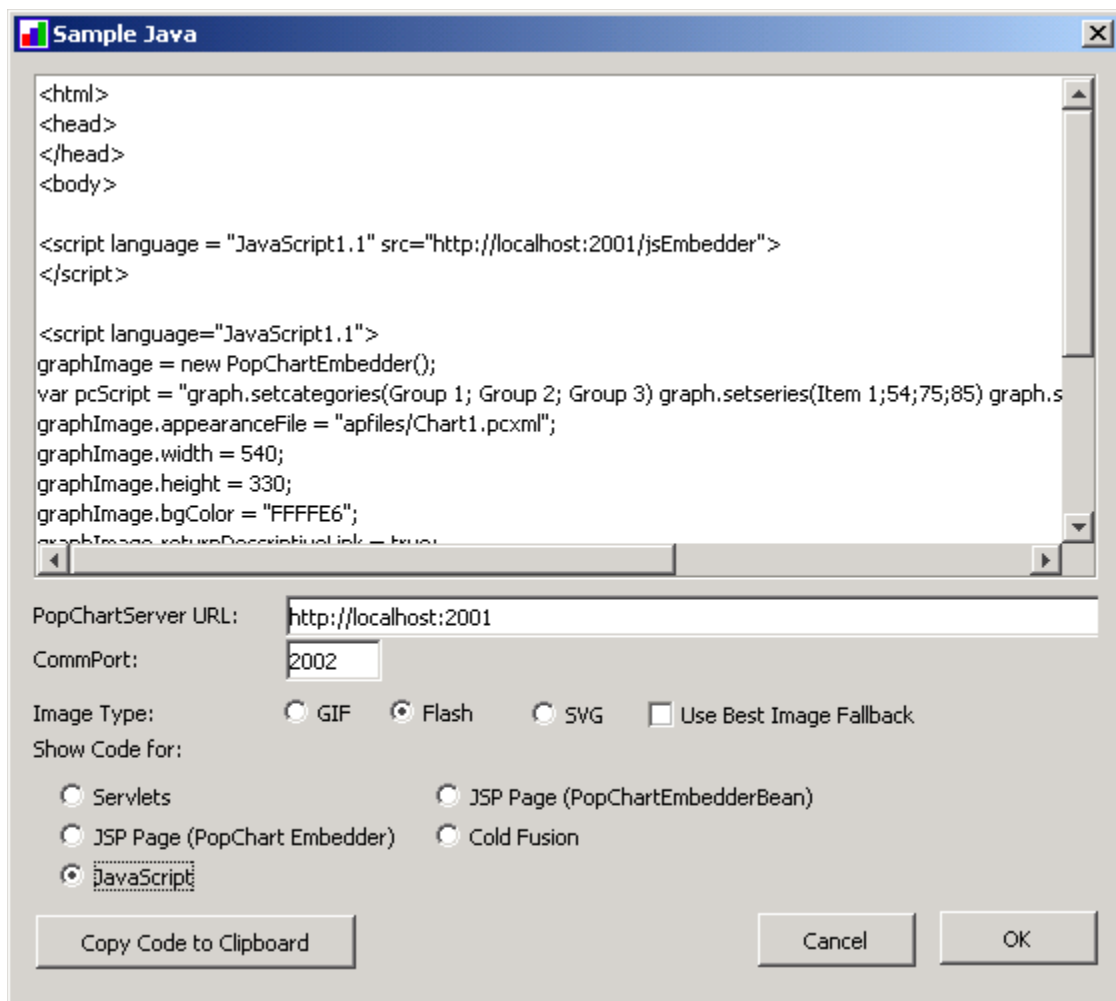
QUICK START
Publishing a Basic PopChart



- 8 Now that you have created an appearance file, you need to create some code to embed your PopChart image. To generate this code, click on **File > Sample Code > Java**.

- QUICK START

- Publishing a Basic PopChart



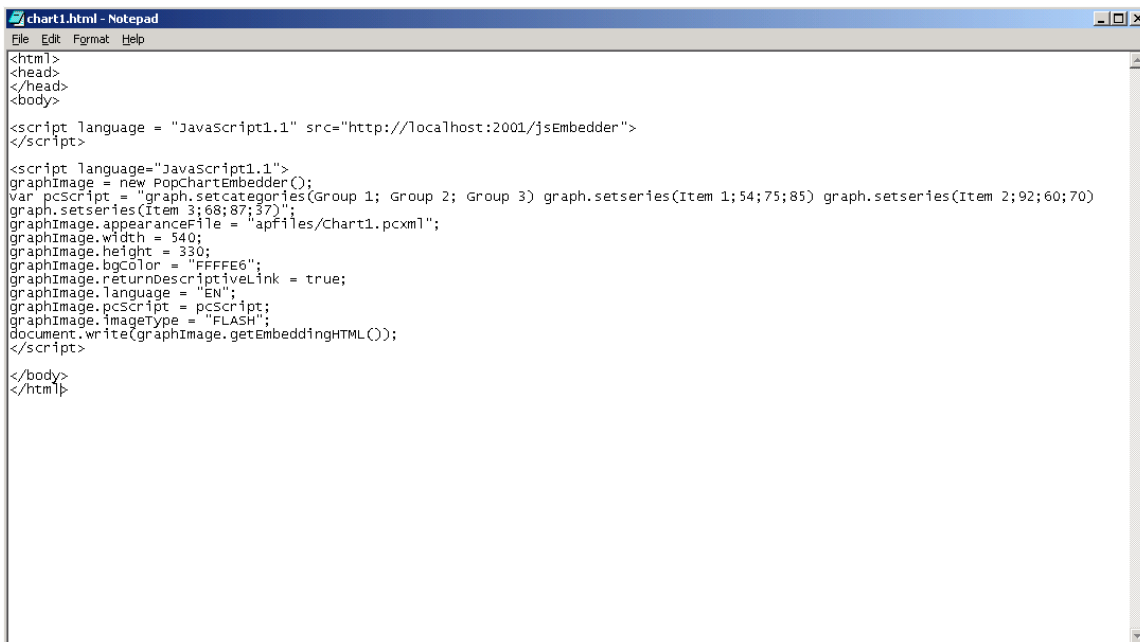
- 9 (Optional) If you will be running PopChart Server on a computer other than the one you are currently on, change the **PopChartServer URL** path to the name of the computer running PopChart Server. Unless you have changed the server port, leave the **:2001** at the end of the address. otherwise, change **2001** to your new server port number.
- 10 Select an image format for your graph (GIF, Flash or SVG).
- 11 Choose **JavaScript** in the **Show Code For** option.

The code that you see is sample code that embeds a PopChart image into a web page, using the appearance file you just saved.

QUICK START
Publishing a Basic PopChart

This particular code uses the JavaScript PopChartEmbedder. The PopChartEmbedder is a utility written for several different environments and languages that helps you embed PopChart images. For more information about using the PopChartEmbedder to embed PopChart images into a web page, refer to Chapter 4, “Embedding PopChart Images in a Web Page,” in the *PopChart Server User Guide*.

12 Click the button marked **Copy Code to Clipboard**.



```

chart1.html - Notepad
File Edit Format Help
<html>
<head>
</head>
<body>

<script language = "JavaScript1.1" src="http://localhost:2001/jsEmbedder">
</script>

<script language="JavaScript1.1">
graphImage = new PopChartEmbedder();
var pcsScript = "graph.setcategories(Group 1; Group 2; Group 3) graph.setseries(Item 1;54;75;85) graph.setseries(Item 2;92;60;70)
graph.setseries(Item 3;68;87;37)";
graphImage.appearanceFile = "apfiles/Chart1.pcxml";
graphImage.width = 540;
graphImage.height = 330;
graphImage.bgColor = "FFFFE6";
graphImage.returnDescriptiveLink = true;
graphImage.language = "EN";
graphImage.pcsScript = pcsScript;
graphImage.imageType = "FLASH";
document.write(graphImage.getEmbeddingHTML());
</script>

</body>
</html>

```

13 Open a text editor (such as Notepad) and paste the data from your clipboard within the page.

Most of the time you will want to add dynamic data and/or special effects to your graph. For information about sending dynamic data to PopChart Server, see Chapter 6, “Sending Dynamic Data to PopChart Server,” in the *PopChart Server User Guide*. For information about special effects, like Drill-down, Data Labels, and PopUp Text, see Chapter 7, “Interactive and Special Effects,” in the *PopChart Server User Guide*.

Note: *Make sure you save your web page as straight text. By default, some text editors (e.g. Mac® OS X’s Text Edit), will save the page in a different format, such as RTF, which will cause a JavaScript error when you try to view the page. Usually, you will be able to override this behavior within your text editor.*

- QUICK START

- Publishing a Basic PopChart

- 14 Save the page as chart1.html. You can save it to any location on your computer.

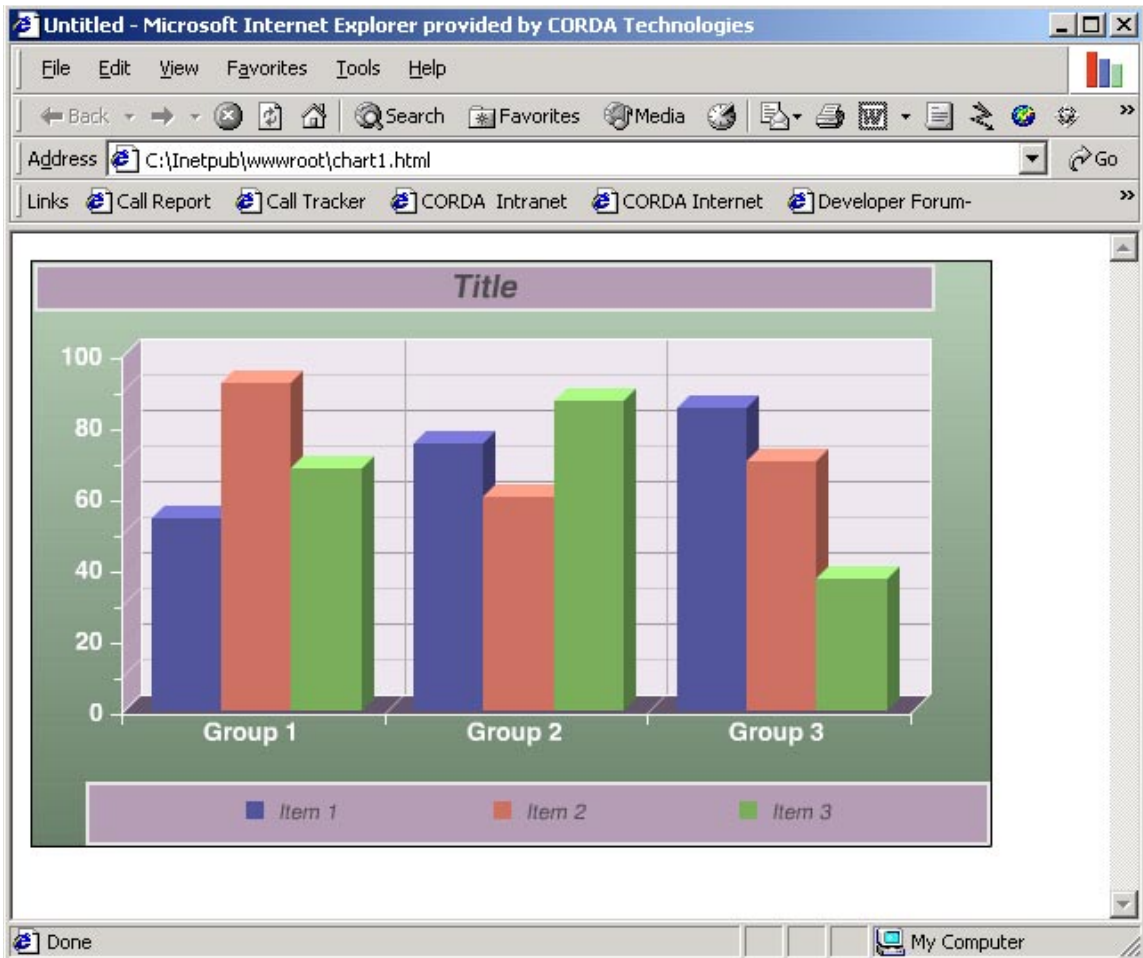


- 15 Start PopChart Server using the installed shortcuts (located in the **Start Menu** for Microsoft Windows®). On Windows systems, you should see the PopChart Server splash screen for a brief moment while PopChart Server starts.

Note: On non-Windows systems, you will not see a splash screen.

If PopChart Server encounters any problems while it starts up, it will notify you with an error message. If you have any problems starting PopChart Server, you should refer to “Starting PopChart Server” on page 2-22 of the [PopChart Server User Guide](#) for help.

QUICK START
Publishing a Basic PopChart



- 16** Open the chart1.html page you created in a web browser. You should now be able to see your final graph in the browser.

Congratulations! You have successfully published a basic PopChart image. To learn more about how to use PopChart 4.0.5, refer to the documents mentioned at the beginning of this Quick Start Guide.

- **QUICK START**
- *Publishing a Basic PopChart*
-
-

